



# FORTUNA ZINGARA

## LONDON

---

Fine Ceramic Tiles - **Fine Porcelain Tiles** - Slabs - Custom Line

---

## RIVIERA

---

**Fine Porcelain Tiles**

■ **3** Colors ■ **2** Sizes ■ **8** Draws ■





The design is inspired by a evening time  
of the light colour in the **Riviera** ,  
available in 2 sizes ,3 colours and 1 finish  
The Italian Riviera in **Liguria** , is a small  
coast just few kilometres long where  
some small fisherman village like **Portofino**,  
**Rapallo** and **Santa Margherita** are  
now considered Mediterranean pearls  
as a glamour turistic place to be.

## INDEX:

Colors 4, 9

Draws 10,17

Sizes 18, 19

Surface Finish 20, 23

Body 24, 27

Packaging data 28, 31

Cleaning & Maintenance 42,45  
Instruction (CERAMIC/PORCELAIN TILES)

Photo by Alberto Bianchini.



# Colors

Available in 3 modern vibrant colors, **ARCTIC WHITE**, **LONDON GREY**, **BELUGA**.

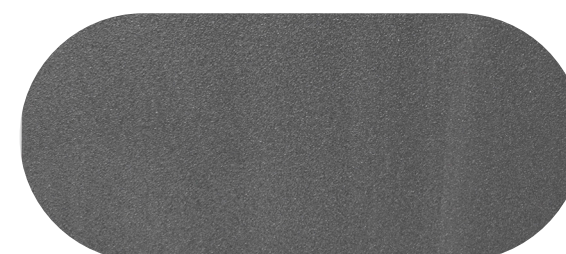
**1** *Arctic White RI-AW-SC*



**2** *London Grey RI-LG-SC*



**3** *Beluga RI-BL-SC*



FORTUNA ZINGARA  
LONDON



*Arctic White*  
*RI-AW-SC*



*London Grey*  
*RI-LG-SC*





*Beluga*  
*RI-BL-SC*





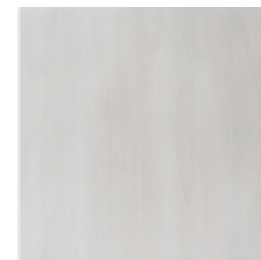
# Draws

The full design of the **Riviera** is developed in 8 different faces in 60x60 cm each of one randomly selected for a full natural design look, demultiplied 60x120 accordingly.

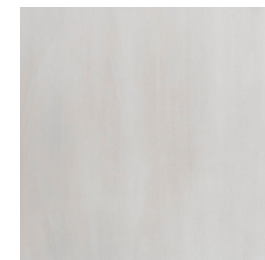
1	2	3	4
5	6	7	8



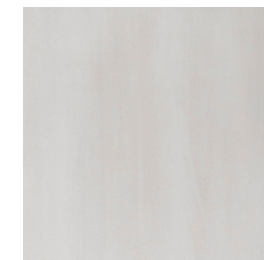
## Draw Arctic White



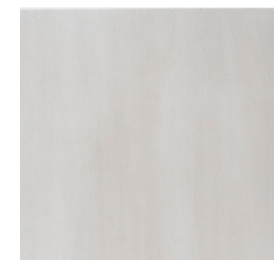
**1**



**2**



**3**



**4**



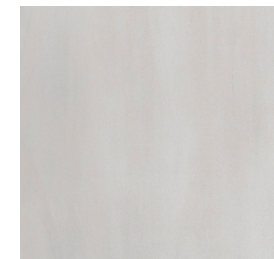
**5**



**6**



**7**

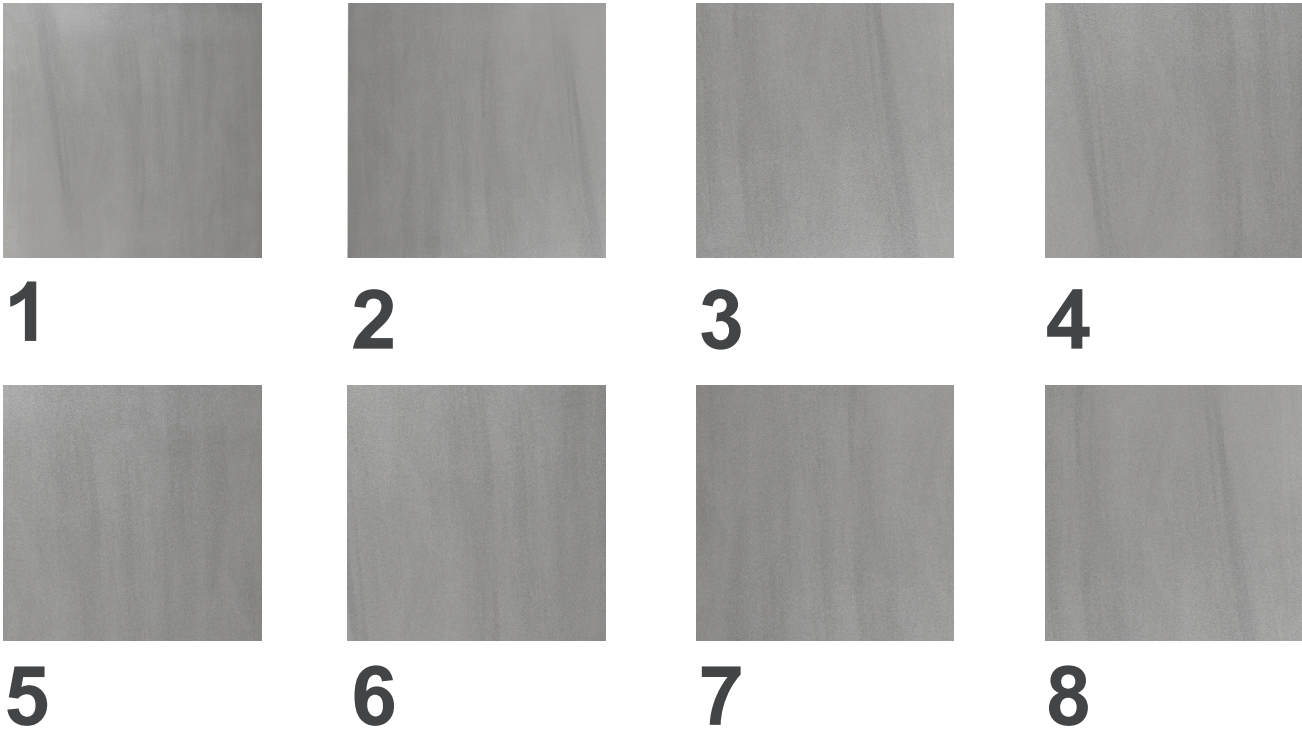


**8**



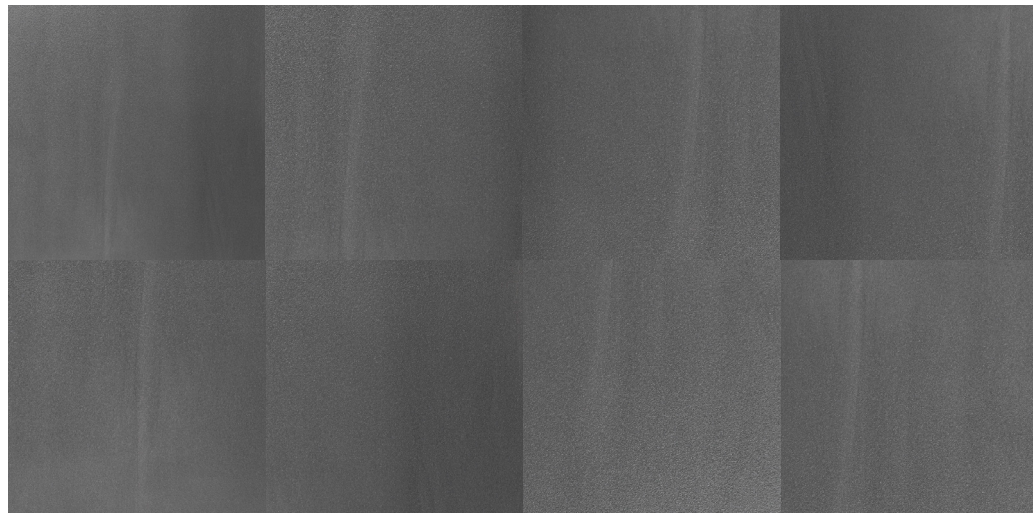
FORTUNA ZINGARA  
LONDON

Draw London Grey

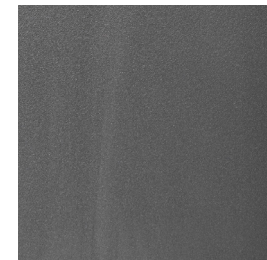




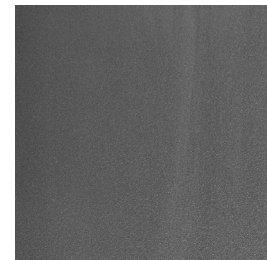
## Draw Beluga



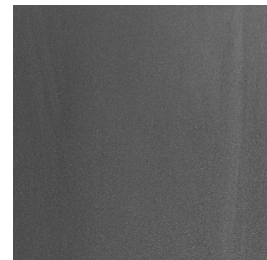
1



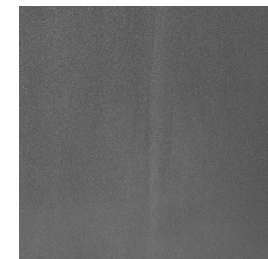
2



3



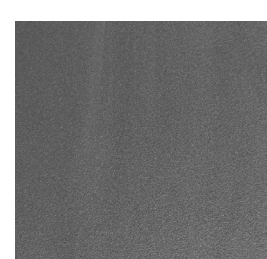
4



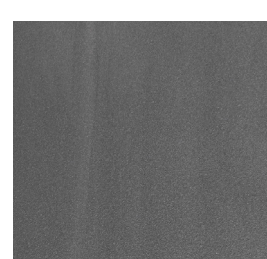
5



6



7



8

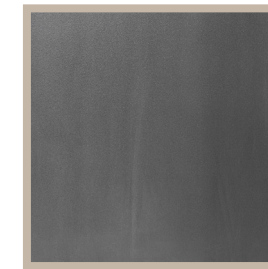
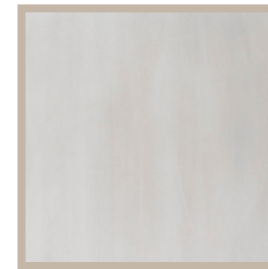


FORTUNA ZINGARA  
LONDON

# Sizes

Available in 60x60 cm, 60x120 cm.

## 1 60x60 cm in the 3 colors



## 2 60x120 cm in the 3 colors





## Sizes Rectified

All sizes of the **Riviera** serie are rectified with **microbevel edge**, this feature will get a smooth and more linear four side edge with less difference in calibre between each single tile, it also allow to install the floor or the wall with a **closer and smaller joint**.







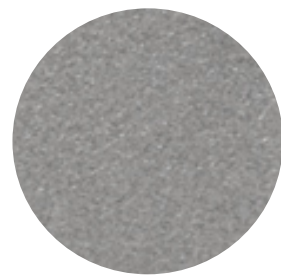


## Surface Finish: Sugar Coat

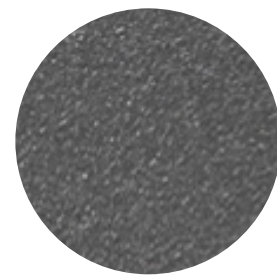
The surface of the Riviera serie is in sugarcoat finish ,the feature of this newest surface glaze is to give **a smooth touch feeling with a very low sparkling** dynamic effect obtained organically by natural and artificial light keeping the **antislippery performance**. This effect has been achieved after one year of study with Italian state of the art glaze specialist VETRICERAMICI.



*Arctic White  
zoom*



*London Grey  
zoom*



*Beluga zoom*

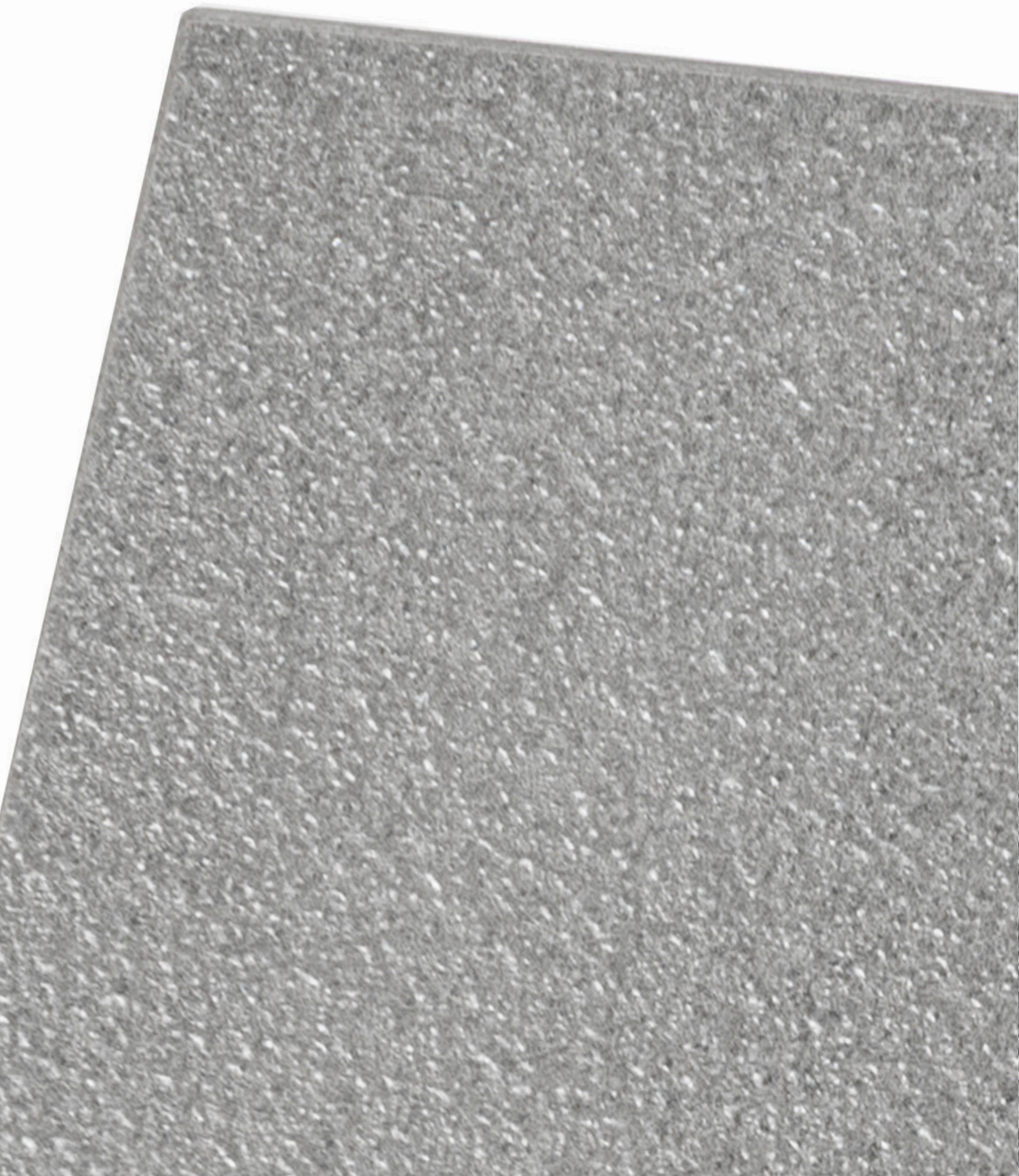


FORTUNA ZINGARA  
LONDON

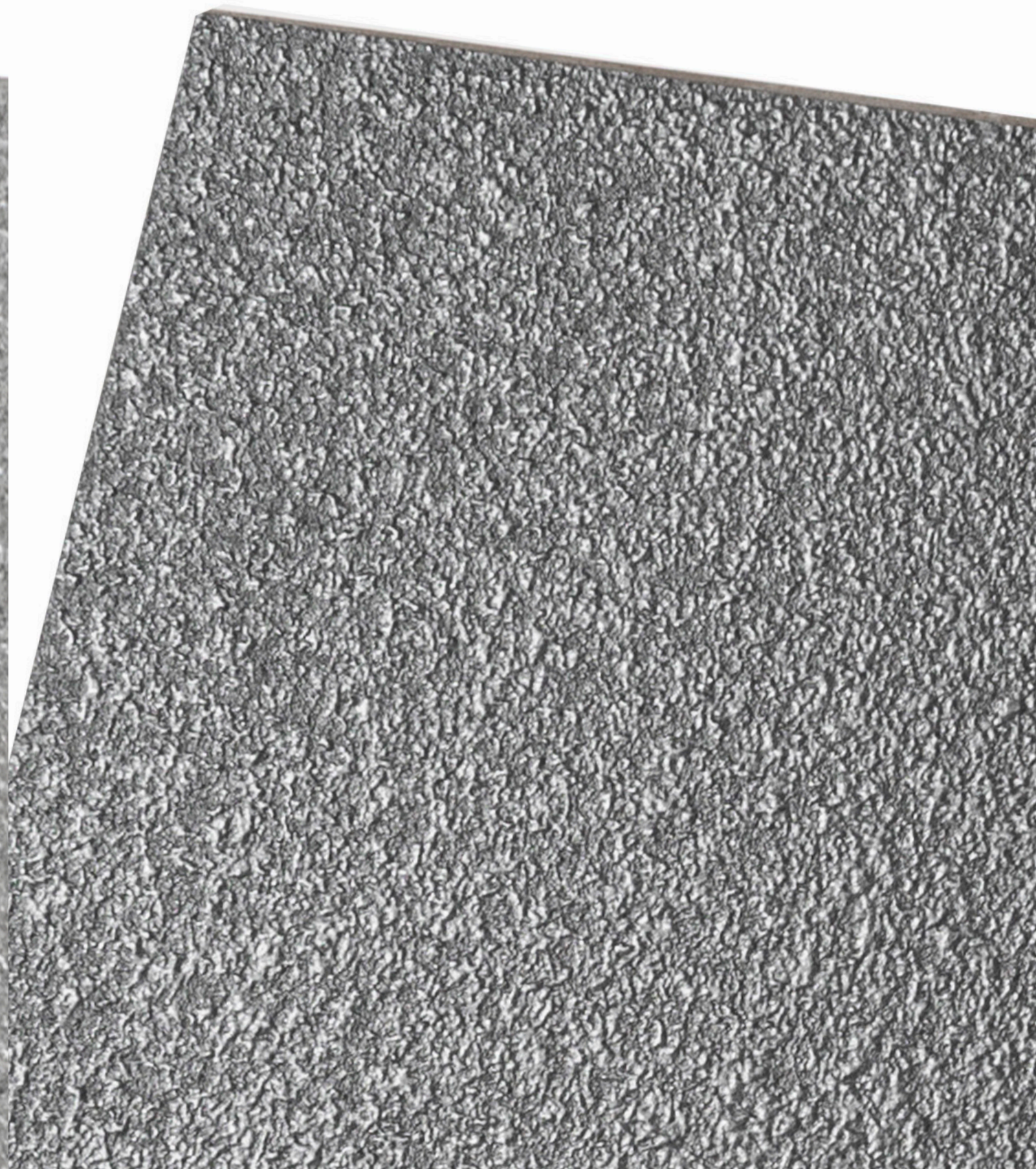


*Arctic White detail of the Surface Finish*





*London Grey detail of the Surface Finish*



*Beluga detail of the Surface Finish*



## Body

The **Riviera** is entirely made in colour body porcelain tiles, the colour of the body is darker for the beluga and lighter for the London Grey and Arctic white **giving a more homogenous effect** and keeping the strengths and the **frostproof characteristic** of the Riviera serie.

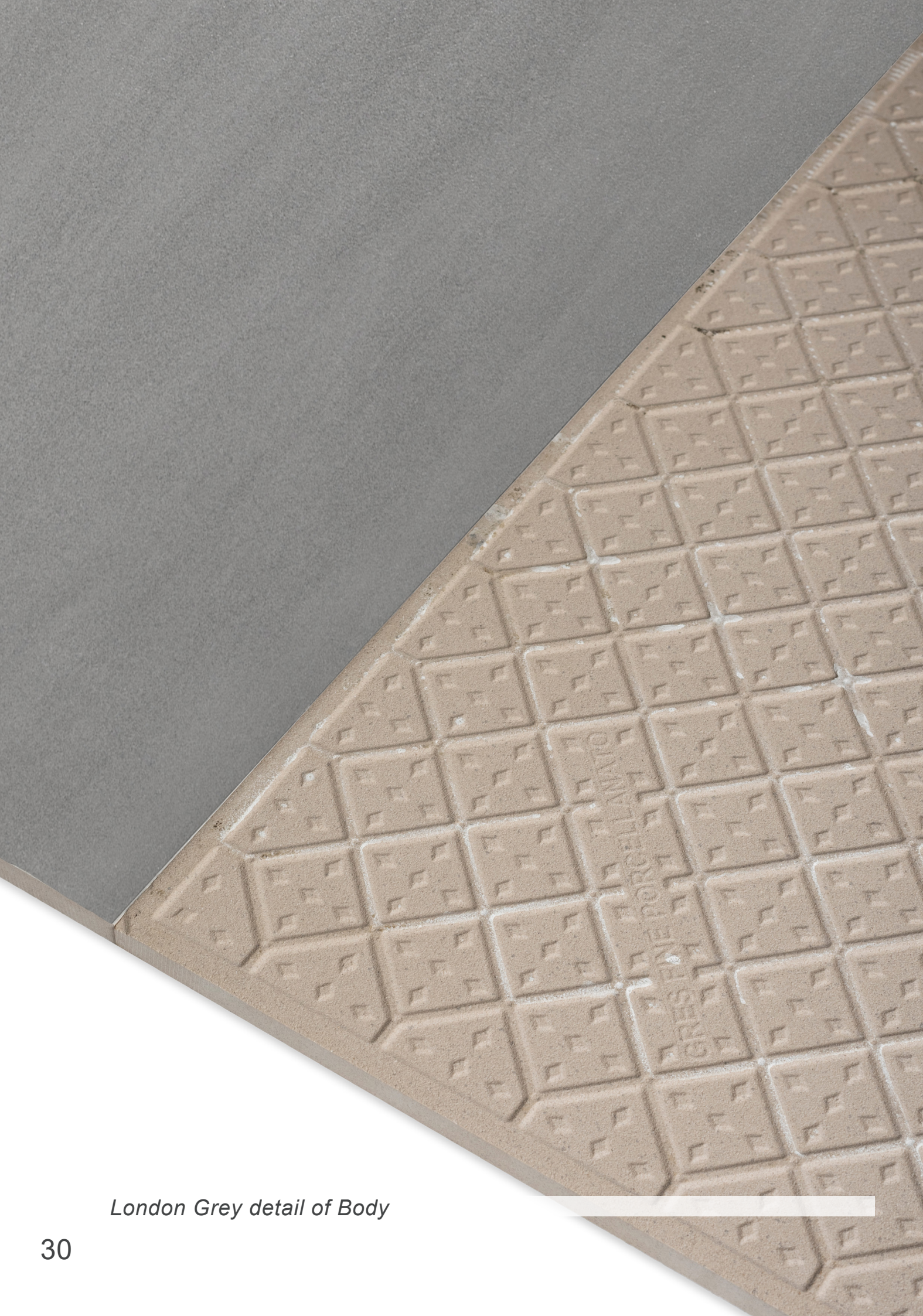


FORTUNA ZINGARA  
LONDON

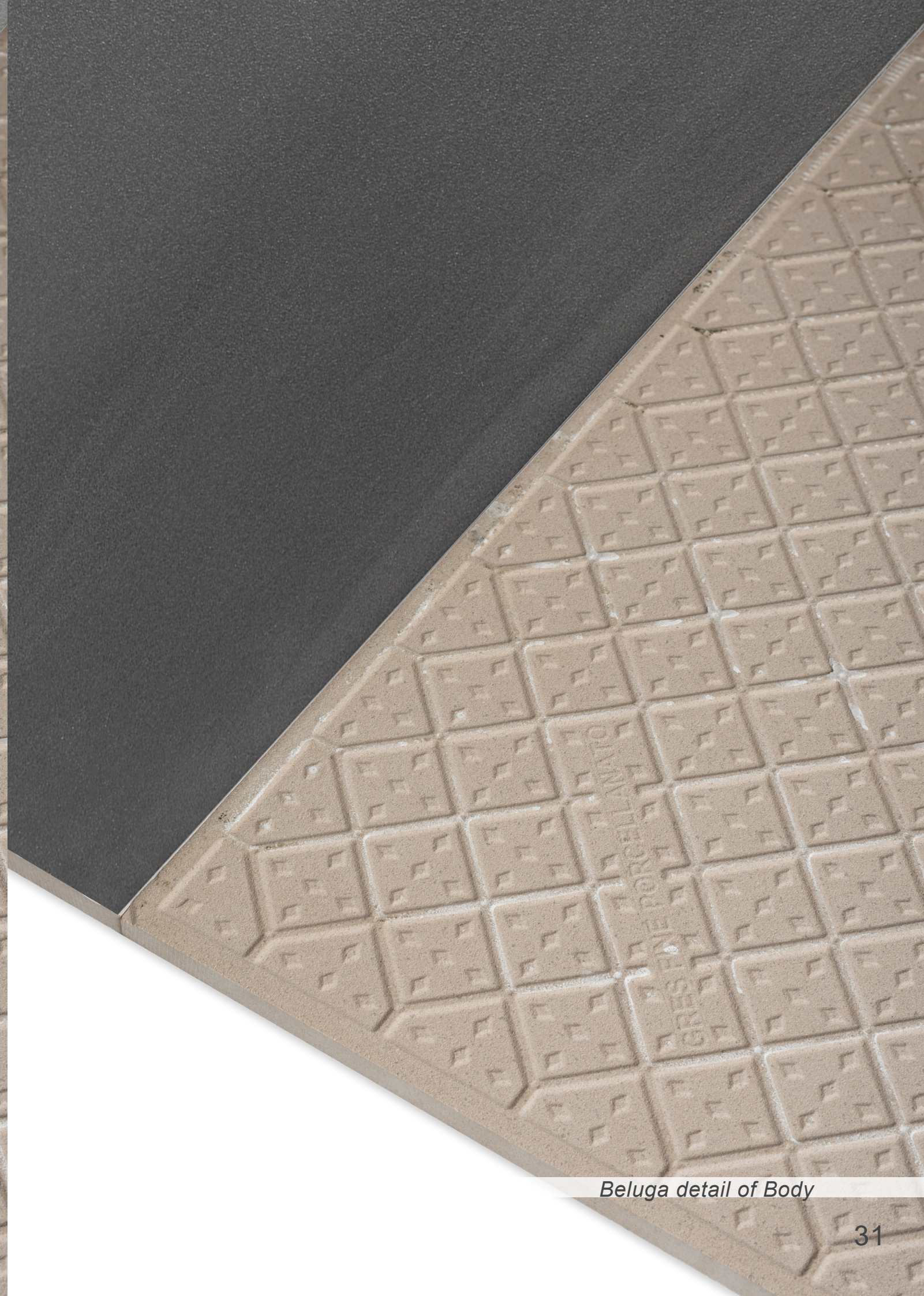


*Arctic White detail of Body*





*London Grey detail of Body*





*Beluga detail of Body*





# Packaging Data

SIZE(CM)	PALLET	BOXES FOR PALLET	SQ MT FOR PALLET	WEIGHT FOR PALLET	Box MQ	KG BOX
 60x120	1	36	51,84	1,036.8	1,44	28,80
 60x60	1	32	46,08	921,00	1,44	28,78

# Cleaning & Maintenance Instruction (CERAMIC/PORCELAIN TILES)

## DURING INSTALLATION:

1. Do not allow any tile adhesive or excess grout to dry on the proper surface of the tile. Unwanted adhesive or excess grout should be cleaned a few minutes after application or before the material become dry. Cleaning should be performed according to the adhesive or grout manufacturer's method and instruction..
2. For protection against construction dirt, scratches and incidental mutilation, the tiles already laid or fixed on the floors must be covered within the duration of the construction.
3. The installed tiles should be cleaned and free from all kinds of construction dirt and grimes before handing over the project.

## FOR REGULAR CLEANING & MAINTENANCE:

1. Wipe off dusts from the surface of the tiles on regular schedule.
2. Dilute 100 ml of commercial degreasing agent (for example: KIWI Kleen Floor Super Active) to 5 litres of clean water.
3. Apply and wipe over the surface with the use of cotton cloth or sponge or mop. Rinsing is not necessary.
4. For floors, allow the cleaned area to dry before permitting pedestrian passage.



## FOR CLEANING WITH FLOOR WASHING MACHINE:

1. Wipe off dusts from the surface of the tiles.
2. Dilute 100 ml of commercial degreasing agent (for example: KIWI Kleen Floor Super Active) to 5 litres of clean water.
3. Pour the solution into the tank, start the floor washing machine and clean the area.
4. Allow the cleaned area to dry before permitting pedestrian passage.

## FOR REMOVAL OF COMMON MARKS OR STAINS:

1. Wipe off dusts from the surface of the tiles.
2. Use undiluted commercial degreasing agent (for example: KIWI Kleen Floor Super Active).
3. Apply and rub over the surface with the use of cotton cloth or sponge or mop.
4. Rinse with water and wipe with dry cotton cloth or mop.
5. For floors, allow the cleaned area to dry before permitting pedestrian passage.



# Cleaning & Maintenance Instruction (CERAMIC/PORCELAIN TILES)

## FOR REMOVAL OF STUBBORN MARKS OR STAINS:

1. Wipe off dusts from the surface of the tiles.
2. Depending on the type of tiles and stain, use undiluted commercial degreasing agent (for example: KIWI Kleen Floor Super Active). Undiluted specialized cleaning agents such as FILA Deterdek, FILA PS/87, FILA PH Zero or other brands of cleaning solutions can also be used.
3. Spread the solution over the affected surface and leave for approximately 3-5 minutes or longer, to allow cleaning reaction. It is recommended to clean initially a sufficiently visible section of a tile and examine the result if suitable, before proceeding to clean the area covered with this material.
4. Rub the solution over the affected surface with the use of cotton cloth or sponge. Use scouring pad, if the marks or stains persist. For large areas, the use electric floor polisher is *recommended*.
- 5) Repeat steps 2 to 5 if necessary.
7. For floors, allow the cleaned area to dry before permitting pedestrian passage.

## NOTICE!

- Cleaning and maintenance program depends essentially on the density of traffic, the condition of the surrounding area where the tiles are installed and the nature of dirt to which the floors or walls are exposed. Thus, routine cleaning and maintenance must be performed according to specific requirements.
- The performance of a product is limited to such an extent. Any spillage of tea, coffee, paint, permanent marker, hair dye and the like on the tiles must be immediately cleaned to prevent severe staining. It is possible that these substances may leave light mark or slight discoloration on the tiles if not immediately cleaned.
- It is not advisable to use hydrofluoric acid solution or its compound for cleaning.
- Do not use metal tools to scrape the dirt from the surface of the tiles.



[www.fortunazingara.com](http://www.fortunazingara.com)  
[london@fortunazingara.com](mailto:london@fortunazingara.com)

---



**FORTUNA ZINGARA**  
LONDON